

softchoice Windows 7 Readiness Assessment

Did you know...

...that between 12-35% of your fleet might require an upgrade to run Windows 7?

Do you know...

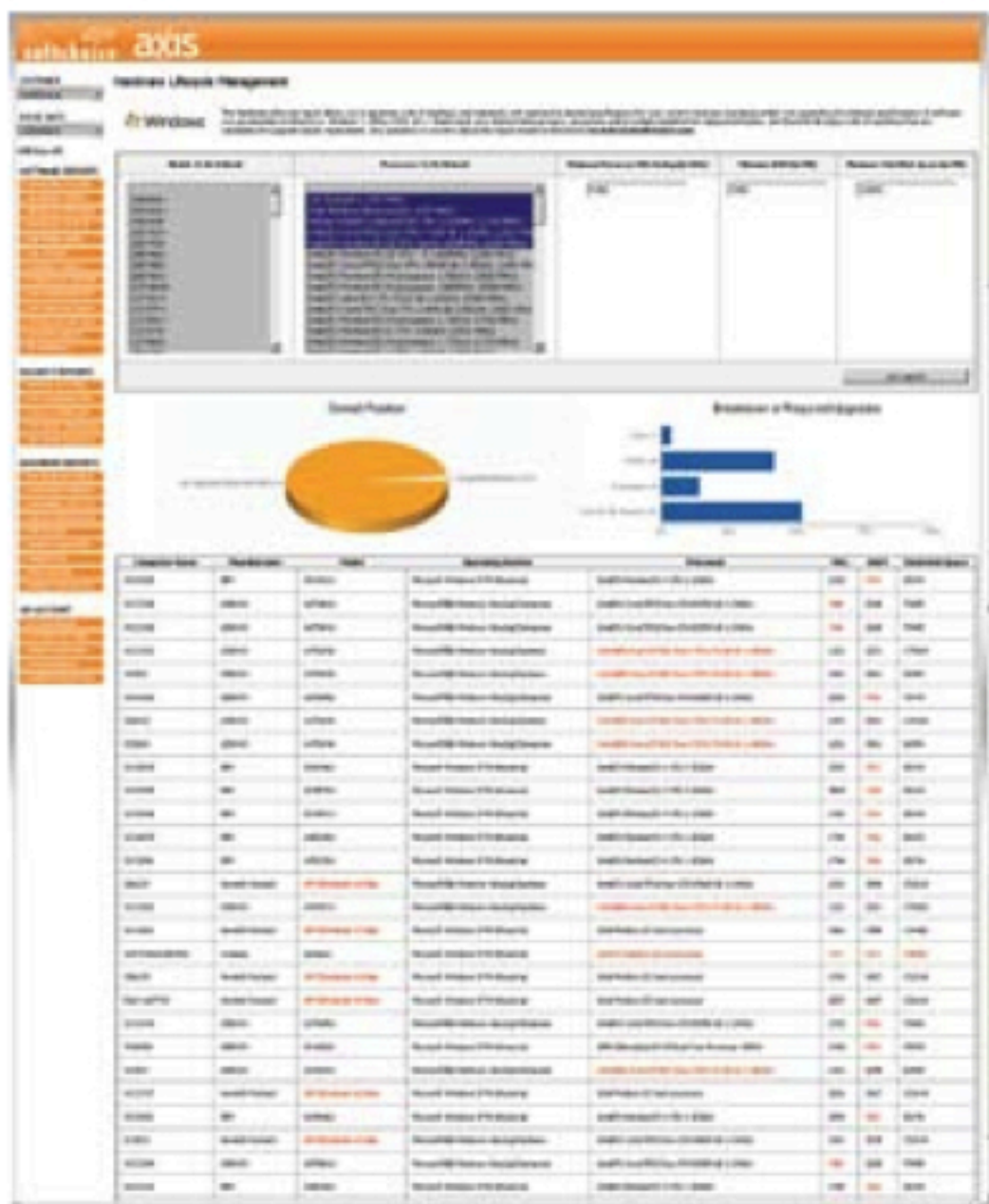
...which ones to upgrade?

...if you already own Windows 7?

...if there are training and deployment funds available to you?

Now you know.

...with an assessment from Softchoice, get ready to deploy Windows 7!



- Generate a list of machines that don't make the grade - with mere clicks of a button.
- Identify specific components requiring upgrade.
- Ensure no money is left on the table - check your entitlements to Microsoft Training & Deployment incentives.
- Gain use of Softchoice Axis, Softchoice's ITAM Portal
- Call your Softchoice Account Executive for details or email techcheck@softchoice.com.

Learn more about Softchoice's TechCheck Services at <http://www.softchoice.com/techcheck>

Based on a study released by Softchoice in October, 2009...

88% of Corporate PCs Able to Meet Minimum System Requirements to Run Windows 7

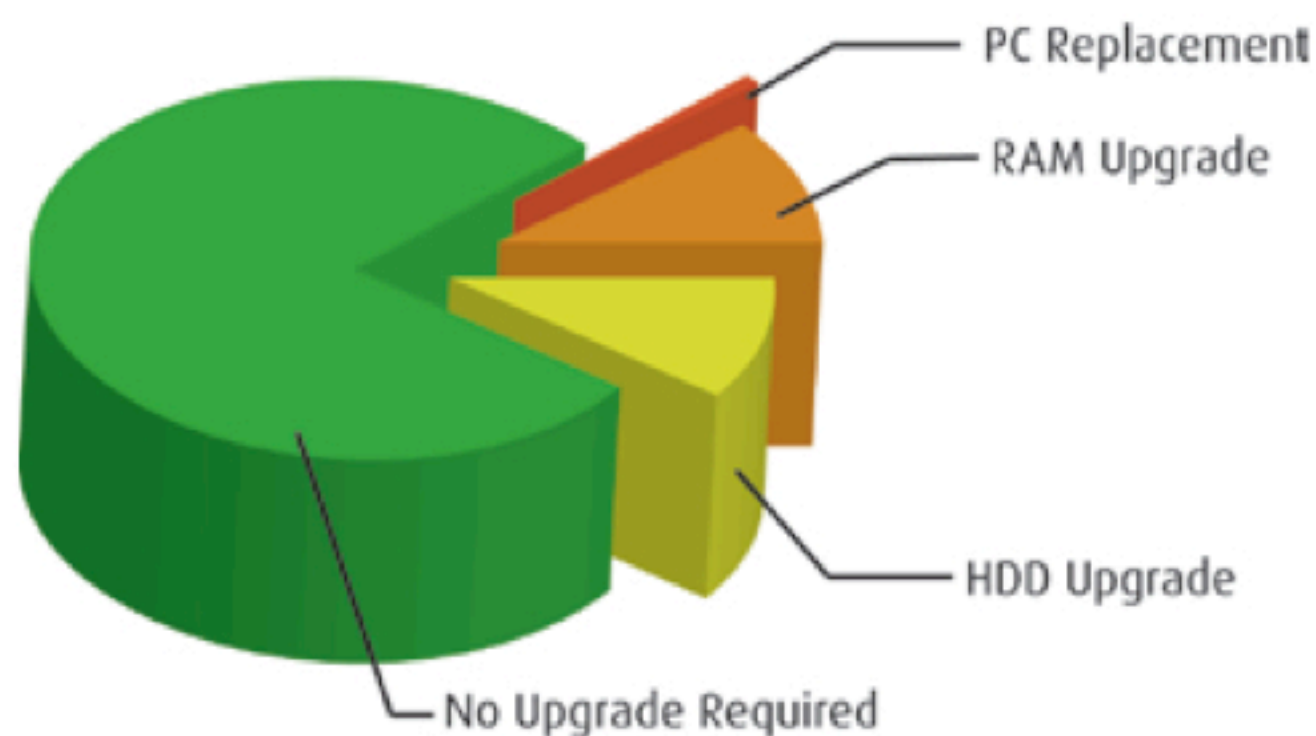
Based on the analysis of 450,000 corporate PCs, Softchoice has determined that within the average organization, 88 percent of desktop and notebook computers meet the system requirements of Microsoft's Windows 7 operating system. Of those machines requiring upgrade to meet the minimum system specifications, 12 percent require hard drive or RAM upgrades while one percent would require replacement, assuming that replacement of these machines would be preferable to upgrading the CPU.

65% of Corporate PCs Able to Meet Optimal System Requirements

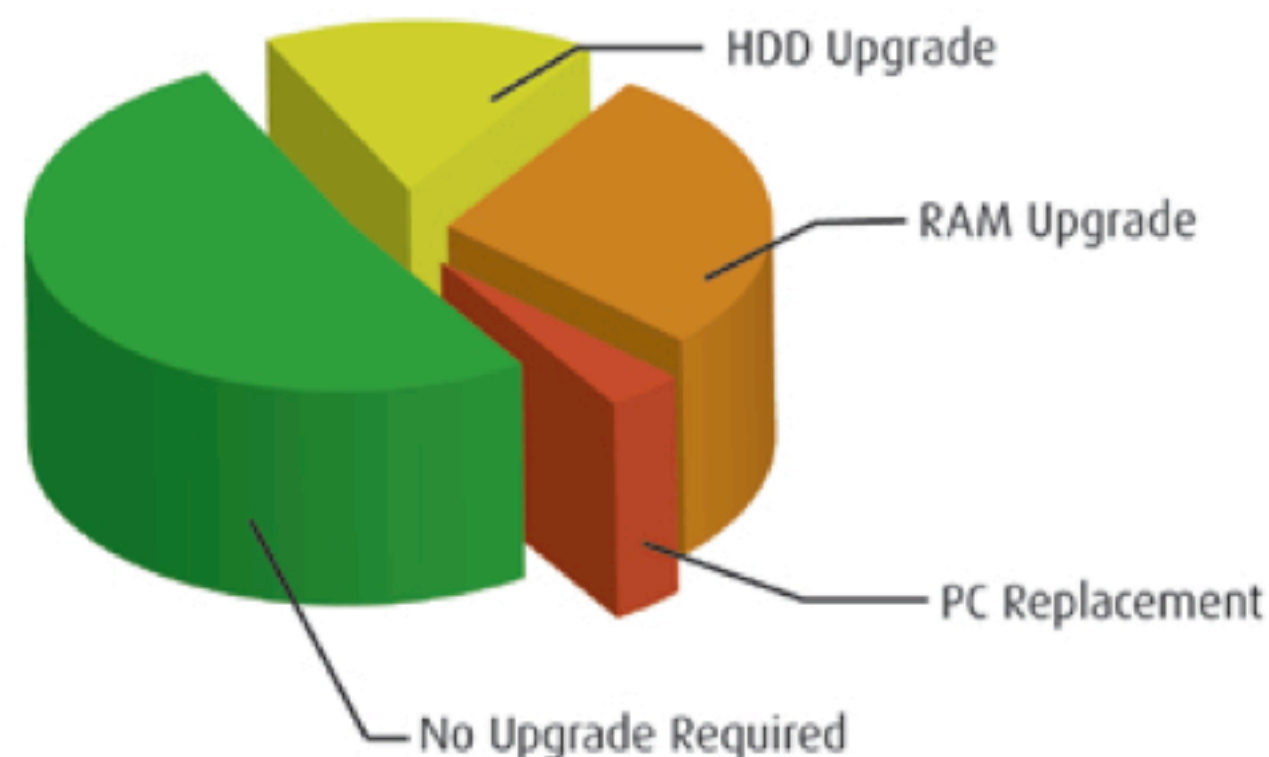
Softchoice's analysis has determined that 65 percent of corporate computers are able to run Windows 7 in its optimal configuration compared to the six percent capable of capitalizing on the advanced features of Windows Vista at the time of release. Of those unable to meet the requirements to support Windows 7 in its optimal configuration, the majority would be able to do so with a basic RAM or hard disc upgrade. Only 5 percent would required outright replacement to run the new Microsoft OS compared to 16 percent for its predecessor.

(over)

Upgrades Required: Minimum Specifications



Upgrades Required: Recommended Specifications



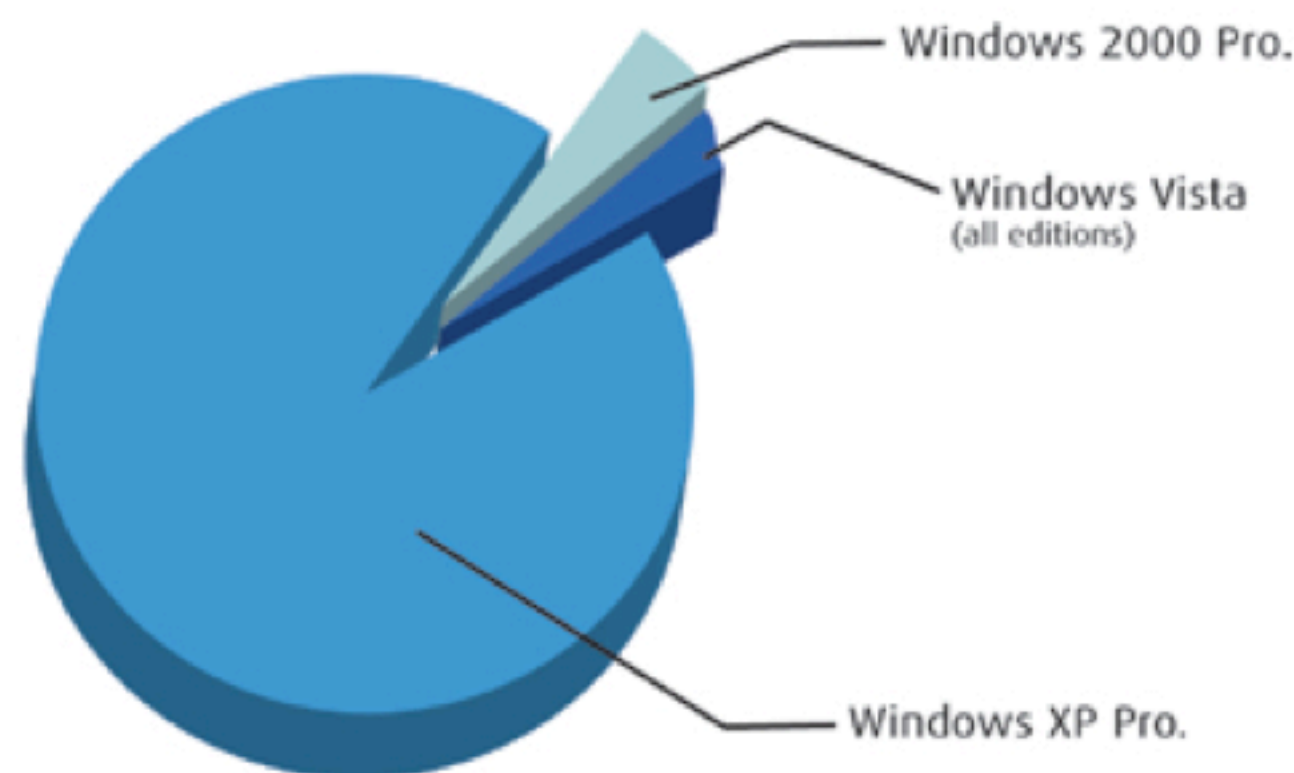
Machines Requiring Upgrade	Windows 7	Vista
Require HDD Upgrade	12%	19%
Require RAM Upgrade	12%	41%
Require CPU Upgrade / Replacement	1%	12%
Overall Upgrades Required	12%	50%
Minimum Specifications (provided by Microsoft)	Windows 7	Vista
Minimum Amount of RAM	1024 MB	512 MB
Minimum Processor Clock Speed	1000 MHz	800 MHz
Minimum Size of Hard Drive	16GB	20GB

Machines Requiring Upgrade	Windows 7	Vista
Require HDD Upgrade	21%	36%
Require RAM Upgrade	35%	78%
Require CPU Upgrade / Replacement	5%	16%
Overall Upgrades Required	35%	94%
Recommended Specifications	Windows 7	Vista
Minimum Amount of RAM	2048 MB	1024 MB
Minimum Processor Clock Speed	1600 MHz	1000 MHz
Minimum Size of Hard Drive	32GB	40GB

Additional Insights

A notable finding was the prevalence of legacy operating systems deployed within organizations. In a typical organization, more than nine in 10 PCs have Windows XP installed and almost one in 10 have a combination of Windows 2000 and Windows NT 4.0 installed. Both of these operating systems are no longer supported by Microsoft. Windows XP itself is nearing 10 years in age and Microsoft has announced it will no longer support this operating system by 2014. On average, roughly 3 percent of desktops surveyed had Windows Vista installed.

Typical Operating System Deployment



Data Collection

The data collection was made possible as a result of Softchoice's award-winning IT assessment services. To provide comprehensive IT asset management services, including licensing gap analysis, hardware lifecycle and IT policy management, Softchoice receives detailed IT inventory data from customer environments. A portion of this data was analyzed in aggregate to produce the findings pertaining to Windows 7 readiness among North American organizations.

As mentioned in...

