



NetApp®



## Datasheet

# NetApp FAS2000 Series

Make the smart decision about how you manage your resources, time, and money

**KEY BENEFITS**

**Start Right**  
More powerful storage systems that fit any budget.

**Keep It Simple**  
Make the most of limited resources.

**Grow Smart**  
Have the flexibility to adapt to the growing needs of your business.

### The Challenge Explosive data growth

Whether you are responsible for a growing midsize business or a remote or branch office of a larger organization, you are challenged more than ever by shrinking budgets, overextended staff, and the need to do more with less. These challenges, coupled with the increasing complexity of your Windows®, VMware®, or server virtualization environment, can quickly eat into your budget and affect your productivity.

### The Solution Start right

Managing server and application sprawl on a shoestring budget? The NetApp FAS2000 series is not only affordable but provides a more powerful platform than other systems in its class:

- Truly unified storage systems with list prices starting under \$7,500.
- All data protocols now included for no additional license fee.

- Two times performance gain over previous-generation systems.
- Administrative overhead slashed by up to 60% by leveraging one common skill set for all NetApp products.

### Keep it simple

Free up your time, money, and people. You don't need to be a storage expert to deploy and manage NetApp storage systems. The NetApp FAS2000 series provides a powerful range of technologies to help increase the efficiency of your storage administrators:

- Rapidly deploy within minutes.
- Manage via your Microsoft® Management Console, minimizing training costs.
- No retraining as you expand capabilities or upgrade to larger systems.
- Get tight integration with strategic virtualization and application partners, enabling administrators to manage 30–100% more storage.
- Cut storage costs by up to 50% with industry-leading efficiency features such as deduplication and thin provisioning.

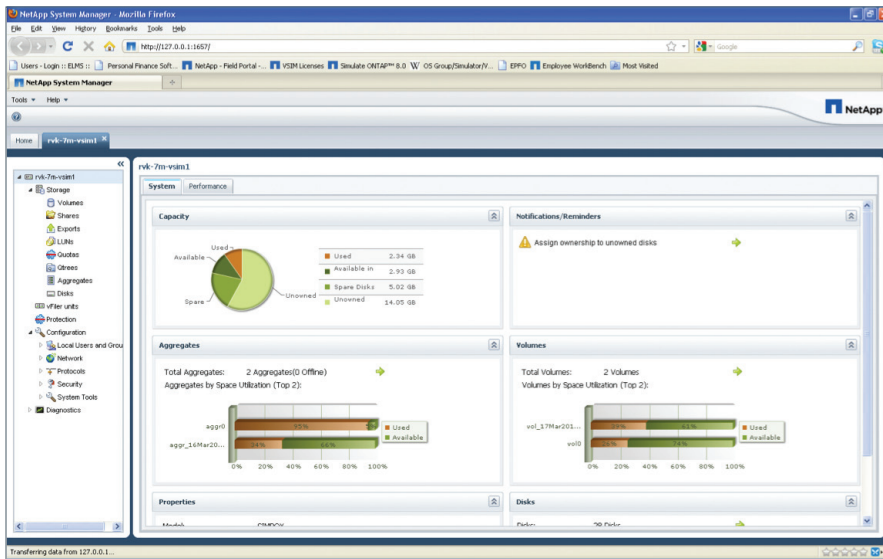


Figure 1) You don't need to be an expert to configure your storage with the simple, easy to use NetApp System Manager Console.

### NetApp OnCommand System Manager

OnCommand System Manager is the simple yet powerful browser-based management tool that enables administrators to easily set up and manage individual NetApp FAS2000 systems. With System Manager, you can:

- Rapidly deploy NetApp storage systems within minutes using System Manager's intuitive wizard and workflow-driven interface.
- Simplify common storage tasks such as creating volumes, LUNs, qtrees, shares, and exports.
- Save time and prevent errors.
- Use it across all NetApp storage systems—unlike competitive products that manage only one class of storage.

### Grow smart

Protect your storage investment with systems that grow with your business needs:

- Get a truly unified storage architecture.
- Expand capacity and add functionality quickly and easily.
- Seamlessly upgrade to other NetApp systems while using the same operating system and software tools.
- Have built-in investment protection with the ability to convert your FAS2240 system to an external disk shelf for upgrading to larger NetApp systems.

NetApp FAS2000 storage systems deliver the right balance of affordability, simplicity, and performance.

### Choosing the Right System

NetApp offers two systems in the FAS2000 family to help you find the perfect balance of price, performance, and features to best fit your needs.

### FAS2240

#### Ideal for higher performance or capacity needs

- For midsize businesses or distributed sites of larger organizations that require higher performance and the latest storage technology
- Ideal for consolidating virtual environments with multiple workloads and Windows applications
- Simple, easy-to-order configurations in either a 2U or 4U form factor

### FAS2040

#### New lower price, ideal for value-oriented deployments

- For midsize businesses, remote offices, and local storage at an affordable price.
- Excellent for consolidating virtualized environments with one to three Windows applications and lighter file-serving workloads.
- Simple, easy-to-order configurations.

FAS2000 SERIES OVERVIEW	FAS2240-2	FAS2240-4	FAS2040
Form Factor	2U/24 Drive	4U/24 Drive	2U/12 Drive
Dual Controllers	Yes	Yes	Yes
Maximum Raw Capacity	374TB	432TB	408TB
Maximum Disk Drives	144	144	136
Maximum Ethernet Ports	8	8	8
Maximum Onboard 4Gb Fibre Channel Ports	N/A	N/A	4
8Gb FC Support	Yes*	Yes*	No
Onboard SAS Port	4	4	2
10Gbe Support	Yes*	Yes*	No
Remote Management	Yes	Yes	Yes
Storage Protocols	FCP, iSCSI, NFS, CIFS	FCP, iSCSI, NFS, CIFS	FCP, iSCSI, NFS, CIFS

Table 1) All specifications are for dual-controller, active-active configurations.

\*Based on optional dual-port 10GbE or 8Gb FC mezzanine card and single slot per controller.

## Data ONTAP® Software

### Simplified software

NetApp FAS2000 systems utilize the Data ONTAP® storage operating system, plus a common set of powerful, easy-to-use data management and data protection software products. The scalable, unified software of NetApp systems uniquely provides a common software environment for both NAS and SAN, from entry systems through the largest data center systems.

With NetApp software on the FAS2000 you can:

- Have each administrator manage two to three times more storage.
- Protect your critical data.
- Reduce disk purchases by 50% or more through a superior set of storage efficiency features.
- Reduce provisioning time by up to 90%.
- Cut test and development time in half.

Included standard with every FAS2000 system is a set of uniquely powerful NetApp software products that deliver highly efficient storage, simple management tools, and high performance. In addition, optional Extended-Value Software products provide advanced capabilities such as instant data recovery, instant cloning, data replication, disk-to-disk backup, and application-aware backup and recovery.

### Global Support SupportEdge services

NetApp Global Support delivers the highest availability for your enterprise data environment and helps you optimize your storage investments. Let NetApp mitigate support issues and drive operational best practices. NetApp's innovative, proactive support means you'll have fewer and less-severe support cases. But if a problem arises, our award-winning technical centers and field support staff—delivering in over 100 countries—won't rest until it's solved.

As an industry leader in innovation, NetApp Global Support provides tools and technology to enable business continuity. AutoSupport™, NetApp's suite of automation tools, is delivered as a service to help you proactively manage your systems and quickly resolve issues. AutoSupport functions as a "virtual staff" to protect critical data, save time, and reduce impact on your IT resources.

### About NetApp

NetApp creates innovative storage and data management solutions that deliver outstanding cost efficiency and accelerate business breakthroughs. Discover our passion for helping companies around the world go further, faster at [www.netapp.com](http://www.netapp.com).

Go further, faster\*

## FAS2240

## FAS2040

### Included Software

Data ONTAP Essentials:

**Efficiency:** FlexVol®, deduplication, and thin provisioning

**Availability:** Multipath I/O, SyncMirror®, and MultiStore®

**Data Protection:** RAID-DP®, Snapshot™, NearStore®, and Open Systems SnapVault®

**Performance:** FlexShare®

**Management:** System Manager, Operations Manager, Protection Manager, Provision Manager

Data ONTAP Base:

**Efficiency:** FlexVol, deduplication and thin provisioning

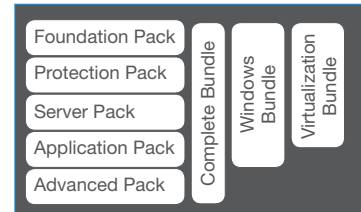
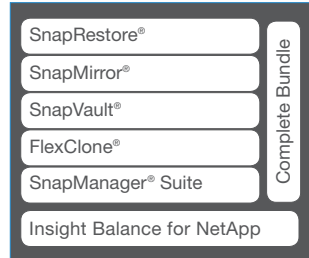
**Availability:** Multipath I/O and SyncMirror

**Data Protection:** RAID-DP, Snapshot and NearStore

**Performance:** FlexShare

**Management:** System Manager, Operations Manager

### Extended-Value Software (optional)



### Software Description

**SnapRestore:** Fast restore of Snapshot copies in seconds

**SnapMirror:** Simple, efficient, and flexible disaster recovery

**SnapVault:** Disk-to-disk backup software for complete backups and online archives to primary or secondary storage in minutes instead of hours or days

**FlexClone:** Instant virtual copies of databases or virtual machines

**SnapManager® Suite:** Application and virtual machine aware backup, recovery, and cloning (for Oracle®, Exchange, SharePoint®, SQL Server®, SAP®, Virtual Infrastructure, and Hyper-V™)

**Insight Balance for NetApp:** Advanced analytics for physical and virtual environments

**Complete Bundle:** All of the Extended-Value Software together in a single bundle for all-inclusive convenience

**Foundation Pack:** Automated provisioning, backup and restore

**Protection Pack:** Multisystem data protection and replication

**Server Pack:** Simple, integrated virtual machine backup and recovery for VMware

**Application Pack:** Integrated application data management and simplified backup and recovery

**Advanced Pack:** Secure partitioning, compliance, virtual cloning

**Virtualization Bundle:** Advanced data protection and storage efficiency for physical and virtual servers

**Windows Bundle:** Advanced data protection, storage, and operational efficiency for your Windows®-based applications

**Complete Bundle:** All of the Extended Value software, together in a single bundle for all-inclusive convenience