



NetApp®
Go further, faster



Software

NetApp SnapManager for Microsoft Exchange

Increase availability and speed backup and recovery for Microsoft Exchange Server data

KEY BENEFITS

Speed Backups and Restores

Back up Microsoft® Exchange Server data in seconds and restore data in a few minutes rather than hours.

Respond Quickly to Change

Add storage capacity and expand volumes without taking the Exchange Server or NetApp® storage system offline.

Increase Productivity

Streamline management and automate common tasks so administrators spend less time on maintenance and more time on value-added tasks.

Protect Exchange Data

Simplify remote replication of Exchange data and enable rapid disaster recovery with the push of a single button.

Recover Single Mailboxes Easily

Securely recover and restore individual mailboxes, e-mail messages or attachments, calendar items, deleted items, drafts, or contacts in minutes without affecting system availability.

THE CHALLENGE

Provide high Exchange availability while reducing costs

Microsoft Exchange is a mission-critical application. Studies show that a majority of business-critical information resides in message stores and that the typical Exchange end user spends a significant part of the workday in the Exchange environment. As the amount of Exchange use and data grows, IT administrators face numerous challenges that include:

- Meeting stringent Exchange availability service-level agreements (SLAs)
- Providing an efficient and reliable storage infrastructure to support an ever-expanding e-mail volume
- Reducing overall administration and management costs

THE SOLUTION

Deploy NetApp SnapManager for Microsoft Exchange

You can streamline data management and simplify configuration, backup, and restore operations for Exchange databases by using NetApp SnapManager® for Microsoft Exchange. When deployed in combination

with NetApp storage systems, SnapManager software enables you to perform near-instantaneous backups and rapid restores, resulting in an industry-leading combination of availability, scalability, performance, and reliability for Exchange environments. Because SnapManager is integrated with NetApp Protection Manager, you can use it to manage backup and replication processes from a central console. SnapManager is also tightly integrated with Microsoft Exchange Server and uses Microsoft standard interfaces as well as the Microsoft VSS infrastructure to further simplify data management processes.

SnapManager for Microsoft Exchange can be used to manage data and storage systems in physical and virtualized infrastructure environments. SnapManager supports leading hypervisor technologies, including VMware®, and is a Microsoft Windows® Server 2008 and Hyper-V™ certified storage management application.

MAXIMIZE EXCHANGE AVAILABILITY

SnapManager software helps you simplify Exchange Server data protection by automating processes to provide hands-off,



2009 ADVANCED INFRASTRUCTURE SOLUTIONS
Storage Solutions
PARTNER OF THE YEAR
WINNER

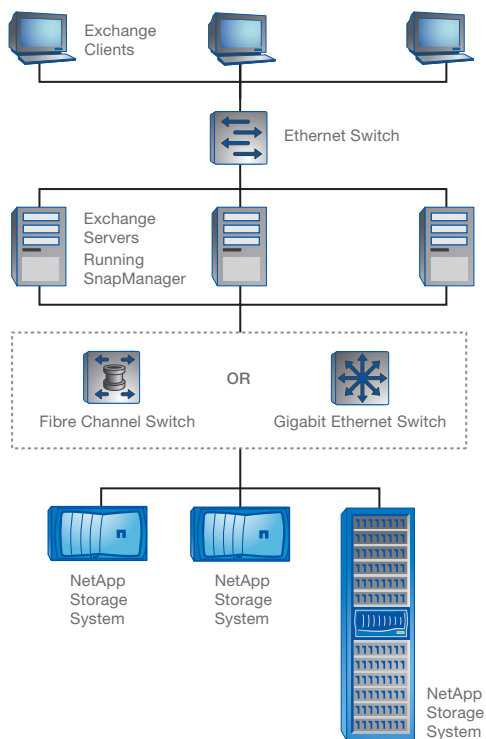


Figure 1) SnapManager in a Fibre Channel/iSCSI environment.

worry-free data management. You can schedule and automate Exchange database backups, use policy-based backup retention management, and simplify the migration of existing databases to NetApp storage systems. You also get built-in high-availability features that enable you to expand Exchange databases online. Tight integration with Microsoft Cluster Server, Microsoft Multipath I/O (MPIO), the NetApp active-active controller configuration option, and NetApp SnapMirror® helps simplify and speed disaster recovery implementation with the push of a single button. In addition, you can enjoy built-in capabilities for nondisruptive, automated, and concurrent backup verifications, with three user-configurable verification modes:

- Auto-verification
- Delayed verification
- No verification

You also have the option to offload verification of backup to other nonproduction hosts.

MINIMIZE PLANNED DOWNTIME

With NetApp storage systems and SnapManager for Exchange, you can scale on the fly to easily add storage and expand volumes, without taking Exchange or NetApp storage systems offline. This

enables you to keep pace with your company's growing storage needs without disrupting Exchange availability.

PROTECT MORE DATA

With SnapManager, you can perform full, consistent online backups of your Exchange databases that require only incremental storage space so you can store up to 255 online copies of Exchange database backups per volume. SnapManager also offers standards-based integration with tape backup products.

In Exchange Server 2010 environments, SnapManager 6.0 for Microsoft Exchange can be used with NetApp FlexClone® technology to efficiently create a full database availability group (DAG) to provide automatic failover at the database level, without the complexity of traditional clustering.

REDUCE RECOVERY TIME

Recovery of Exchange databases is quick and easy with SnapManager. You choose the specific point to which you want to recover. Within a single restore operation, you can select different points of recovery, and depending on the nature of your restore requirement, you can also choose from a wide range of restore options, including:

- Full Exchange Server content recovery
- Individual Exchange storage group recovery
- Individual Exchange database recovery
- LUN recovery

With SnapManager, it's easy to restore Exchange databases to any server of your choice. This helps speed disaster recovery and facilitates testing of the Snapshot™ restore procedure before an actual need occurs. SnapManager 6.0 for Microsoft Exchange is integrated with NetApp Single Mailbox Recovery 6.0 software so that you can recover and restore an individual mailbox or e-mail message quickly and securely using the "point and click" features of the SnapManager management console.

IMPROVE TCO

You get supremely low total cost of ownership when you deploy SnapManager for Exchange on NetApp storage systems. Our streamlined storage and data management features can greatly reduce your administrative time and expense. You can also reduce costs by optimizing your storage utilization through server consolidation and on-the-fly scalability. And because our solutions support both iSCSI and Fibre Channel environments, you can leverage your current network investment

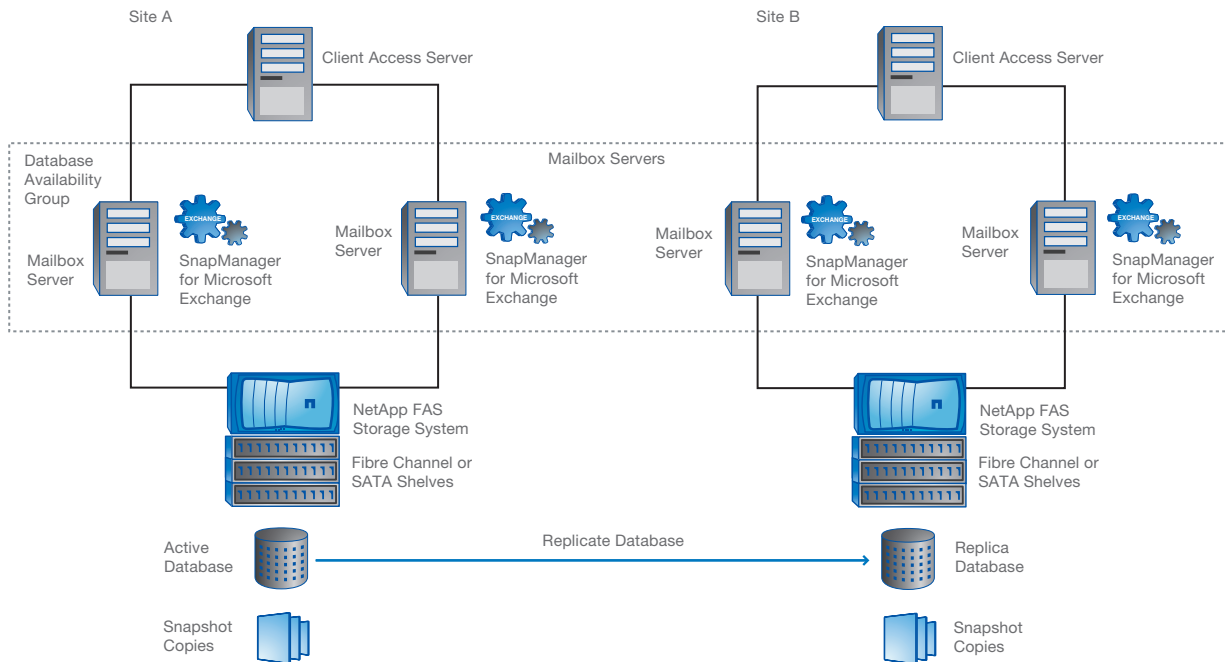


Figure 2) SnapManager 6.0 for Microsoft Exchange in a Microsoft Exchange Server 2010 environment.

while deploying a long-term, highly scalable, cost-efficient storage solution.

In Microsoft Exchange Server 2007 environments using cluster continuous replication (CCR), SnapManager for Exchange helps you to further extend the value of your existing storage investment with its ability to manage and protect Exchange data in heterogeneous storage environments.

SYSTEM REQUIREMENTS

NetApp SnapManager 6.0 for Microsoft Exchange requires:

- NetApp SnapDrive® 6.1 or later
- NetApp SnapRestore® software
- FCP or iSCSI protocol
- Microsoft Windows Server 2003 or 2008
- Microsoft Exchange Server 2003 with SP2 or later, Exchange Server 2007 with SP1 or later, or Exchange Server 2010
- Microsoft Windows PowerShell 1.0 for Exchange Server 2003 and 2007 deployments or Windows PowerShell 2.0 for Exchange Server 2010 deployments
- Microsoft Management Console (MMC)



www.netapp.com

NetApp creates innovative storage and data management solutions that accelerate business breakthroughs and deliver outstanding cost efficiency. Discover our passion for helping companies around the world go further, faster at netapp.com.

© 2010 NetApp. All rights reserved. Specifications are subject to change without notice. NetApp, the NetApp logo, Go further, faster, FlexClone, SnapDrive, SnapManager, SnapMirror, SnapRestore, and Snapshot are trademarks or registered trademarks of NetApp, Inc. in the United States and/or other countries. Microsoft and Windows are registered trademarks and Hyper-V is a trademark of Microsoft Corporation. VMware is a registered trademark of VMware, Inc. All other brands or products are trademarks or registered trademarks of their respective holders and should be treated as such. DS-2309-0110