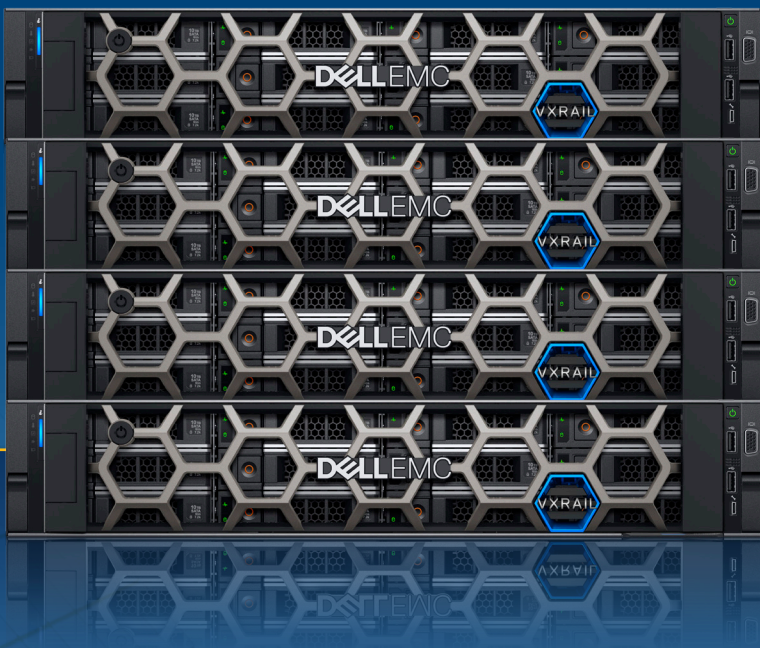
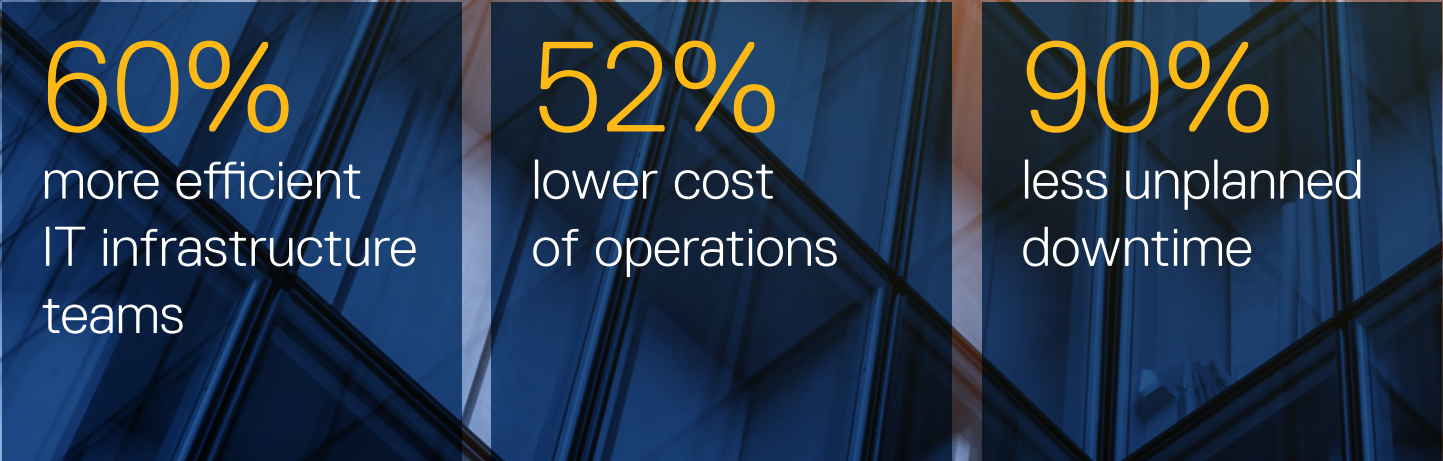
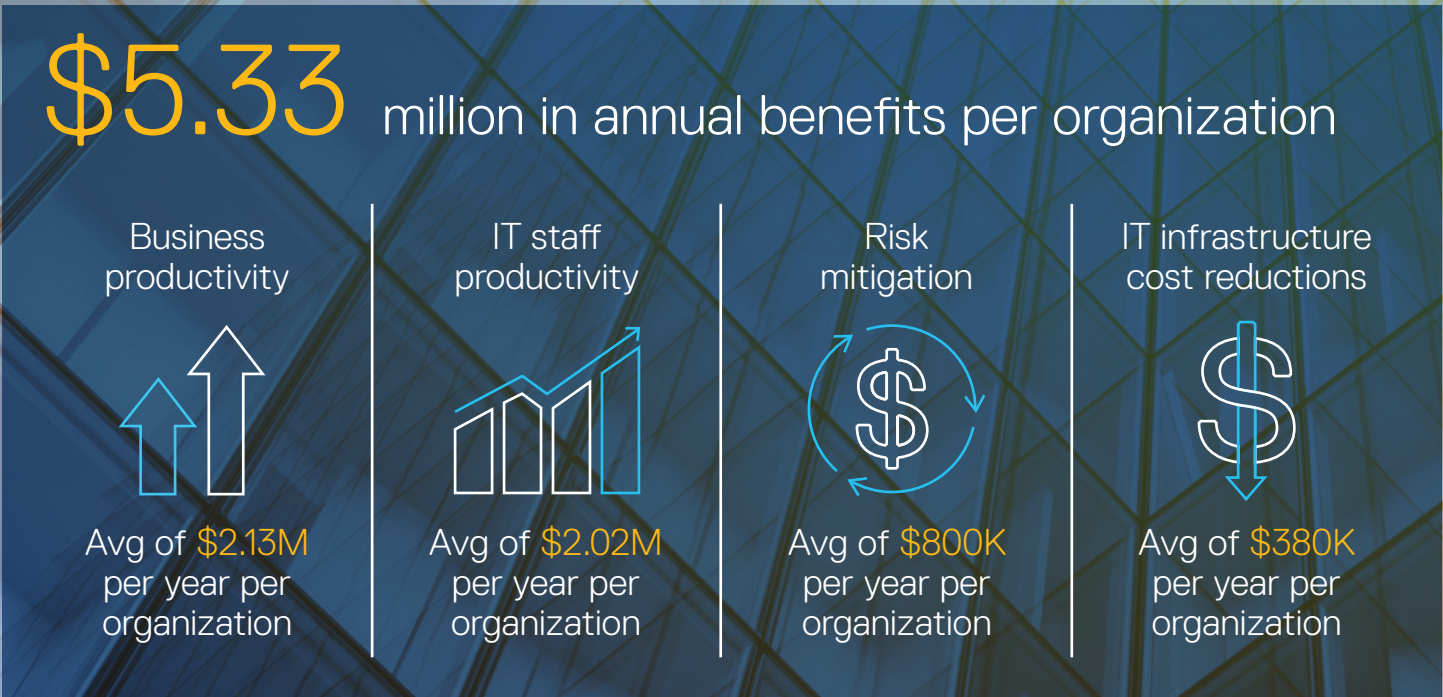


# Delivering faster innovation with Dell EMC VMware-based HCI

IDC's analysis shows that study participants are realizing significant value in their investment in Dell EMC VMware-based HCI solutions, including VxRail and VxRack SDDC, in both absolute and relative terms.



## Business value highlights



Delivering Efficient Business Expansion with Dell EMC VMware-Based HCI, IDC, October 2018.  
Firmographics of study participants  
IDC interviewed seven organizations to understand the impact of deploying VxRail and VxRack SDDC appliances on their IT costs and performance, and business and operational results. Study participants were from both the enterprise and small to mid-market segments, with an average employee base of 21,736 and median of 1,400 (Table 1). Interviewed organizations have annual average and median revenues of above \$1 billion, and represented the operational experiences of a variety of industry verticals.

