

HOW TO PLAN YOUR SAP HANA MIGRATION—TODAY

6 TIPS FROM
SOFTCHOICE'S
IT EXPERTS



SAP® is mandating a migration to SAP HANA® by 2025. For some, this date may seem off in the distance. But for SAP customers wishing to stay with SAP, this deadline will arrive quicker than expected. For many organizations, the move will require new hardware and infrastructure to support the modern in-memory SAP HANA database and that's just the start.

IT leaders may also struggle with a number of other challenges on the path to SAP HANA. In fact, a recent [Rimini Street report](#) notes that 65% of businesses don't have a plan in place to migrate to the new suite. Citing major costs and unclear business value, they want to stick with their proven ERP release. At the same time, hybrid IT and cloud plans being made today could have direct implications for your SAP future.

This guide will help shed light on how IT leaders can navigate this stressful situation. In it, you will find six simple, practical tips to help you understand your options, build a business case and begin architecting the infrastructure for your SAP future, with confidence.

THE CLOCK IS TICKING ON THAT DEADLINE. LET'S GET STARTED!



TIP #1: START PLANNING NOW

Even with seven years to go, businesses have no time to waste in getting ready for SAP HANA.

Basic infrastructure upgrades are already hard to get right. With SAP, the task is enormous. SAP HANA's in-memory design means you have to overhaul existing storage, server and compute investments. Competitive advantages also add urgency. Businesses who wait too long will be surpassed by competitors who adopt digital transformation and performance gains first.



TIP #2: TAKE ADVANTAGE OF HARDWARE REFRESH CYCLES

As your servers and storage reach their natural end dates, you have an opportunity to kick-start SAP HANA planning. Instead of tacking on traditional servers and storage arrays, investigate the numerous new solutions that support in-memory databases. Pre-built, pre-configured architectures offer performance wins now, and flexibility for SAP HANA later. IBM Power Systems™, for example, is a highly-efficient, versatile solution which will support your needs today, and be ready for HANA when you make the move.

[Find out how to pick the best hardware options, by requesting a call with Softchoice's Greg McDonald, our resident IBM Power expert.](#)

TIP #3: DECIDE ON HYBRID IT AND CLOUD PATHS

SAP HANA also opens the door to numerous cloud and hybrid IT options. The decisions you take today will affect how you deploy SAP HANA later. The good news is, there are multiple paths available, including on-premise, private or public cloud, and hybrid.

Likely, your cloud strategy is already top of mind. Use HANA as a way to shape these discussions around concrete goals. For example, if you want to host SAP on Amazon Web Services (AWS) or Microsoft Azure, you must also define shared-responsibilities, and identify skills gaps and outsourcing needs.



TIP #4: BUILD THE BUSINESS CASE

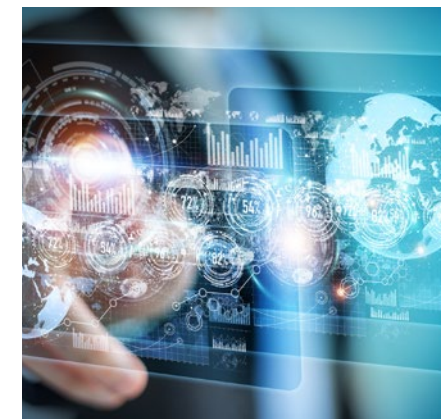
Enterprise leaders say re-implementing for HANA will cost between \$10 and \$100 million. If it seems expensive, it's because it is. But that is the wrong way to look at it. Instead, IT leaders should re-frame the discussion in terms the business can't ignore: value.

SAP HANA is very different from its predecessors in terms of features and capacity. These offer numerous concrete benefits, such as performance and simplicity, but that's only half the story. SAP HANA also helps push forward total digital transformation, re-imagining the entire ERP ecosystem and how your business operates. Unveil SAP's transformational value and you will earn the buy-in.

TIP #5: BUILD YOUR ROADMAP WITH TRANSFORMATION NAVIGATOR

Many customers struggle to make sense of the numerous options and technology roadmaps for SAP's many, many products (2,100 and counting, including popular cloud-hosted apps for operations such as HR and finances).

This is why you need to check out the Transformation Navigator — a tool SAP released to clear up the confusion and help customers get clear on the most effective roadmap. With it, you will build a solid business plan and get clear recommendations on integration, management services and licensing.



TIP #6: DEFINE YOUR SIZING FOR SAP AND BACKUPS

As you plan for SAP HANA, you need to keep a few key architectural considerations in mind. Start by sizing your hardware for an SAP HANA world using SAP's Quick Sizer tool. From there, make sure you plan for backup and recovery hardware too. Regardless of the move to in-memory production, you still need reliable, redundant and accessible backup and recovery hardware.



THE ROAD TO 2025...

YOU'VE READ THE GUIDE, AND GOT A FEEL FOR YOUR PLANNING FOR SAP HANA. NOW WHAT?

Maybe you are ready to move. Maybe you still need to convince your CFO. Maybe you just need help deciding on the hardware roadmap.

Regardless of where you are on your journey, you require the right information, advice, and framework to make the best decisions.

DEFINE YOUR DATA CENTER NEEDS:

Softchoice's Data Center TechCheck provides a detailed review of your current environment and actionable insights to plan for the future. [Learn more.](#)

SELECT YOUR HARDWARE:

Choose the best hardware and architecture to meet your needs. Request a meeting with Greg McDonald to see how IBM Power compares to other solutions in meeting your unique goals. [Send a meeting request](#)

