



C2G CORE CONNECTIVITY SOLUTIONS

Quick Reference Guide

C2G[®]
A brand of **legrand**

HDMI CONNECTIVITY

HDMI® is the most popular audio/video connection for most consumer electronics today. The HDMI signal carries digital audio and video at resolutions up to 4k and is the digital replacement for analog video standards.



HDMI Cables

Perfect for desktop audio/video applications requiring high speed HDMI features and video resolutions up to 4K.

| Part # | Length | Signal Type | Connector | Active/Passive | Max Bandwidth | Max Resolution | Refresh Rate | Jacket Rating |
|--------|--------|-------------|-----------|----------------|--------------------|------------------|--------------|---------------|
| 56781 | 1ft | HDMI 2.0 | Standard | Passive | 18 Gbps High Speed | 4K (3840 x 2160) | 60Hz | PVC |
| 50606 | 1.5ft | | | | | | | |
| 50607 | 2ft | | | | | | | |
| 56782 | 3ft | | | | | | | |
| 50608 | 4ft | | | | | | | |
| 50609 | 5ft | | | | | | | |
| 56783 | 6ft | | | | | | | |
| 50610 | 8ft | | | | | | | |
| 56784 | 10ft | | | | | | | |
| 50611 | 12ft | HDMI 2.0 | Standard | Passive | 18 Gbps High Speed | 4K (3840 x 2160) | 60Hz | In Wall, CL2 |
| 50612 | 15ft | | | | | | | |



Ultra Flexible HDMI Cables

High-Speed cables designed for installation in tight spaces.

| Part # | Length | Signal Type | Connector | Active/Passive | Max Bandwidth | Max Resolution | Refresh Rate | Jacket Rating |
|--------|--------|-------------|-----------|----------------|--------------------|------------------|--------------|---------------|
| 41361 | 1ft | HDMI 2.0 | Standard | Passive | 18 Gbps High Speed | 4K (3840 x 2160) | 60Hz | PVC |
| 41362 | 2ft | | | | | | | |
| 41363 | 3ft | | | | | | | |
| 41364 | 6ft | | | | | | | |



HDMI Cables with Gripping Connectors

High speed or standard speed cables with 3x greater port retention.

| Part # | Length | Signal Type | Connector | Active/Passive | Max Bandwidth | Max Resolution | Refresh Rate | Jacket Rating |
|--------|--------|-------------|-----------|----------------|--------------------------|------------------|--------------|---------------|
| 29674 | 1.5ft | HDMI 2.0 | Gripping | Passive | 18 Gbps High Speed | 4K (3840 x 2160) | 60Hz | PVC |
| 29675 | 3ft | | | | | | | |
| 29676 | 5ft | | | | | | | |
| 29677 | 6ft | | | | | | | |
| 29678 | 10ft | | | | | | | |
| 29679 | 12ft | | | | | | | |
| 29680 | 15ft | | | | | | | |
| 29681 | 16.5ft | HDMI 1.4 | Gripping | Passive | 10.2 Gbps High Speed | 4K (3840 x 2160) | 30Hz | In Wall, CL3 |
| 29682 | 20ft | | | | | | | |
| 29683 | 25ft | | | | | | | |
| 29684 | 35ft | | | | | | | |
| 29685 | 40ft | HDMI 1.3 | Gripping | Passive | 10.2 Gbps Standard Speed | (1920 x 1080) | 60Hz | In Wall, CL3 |
| 29686 | 50ft | | | | | | | |
| 42528 | 15ft | HDMI 1.4 | Gripping | Passive | 10.2 Gbps High Speed | 4K (3840 x 2160) | 60Hz | CL2P, Plenum |
| 42529 | 25ft | | | | | | | |
| 42530 | 35ft | HDMI 1.3 | Gripping | Passive | 10.2 Gbps Standard Speed | (1920 x 1080) | 60Hz | CL2P, Plenum |
| 42531 | 40ft | | | | | | | |
| 42532 | 50ft | | | | | | | |



HDMI Active Optical Cables (AOC)

These cables have an optical fiber construction between the connectors, providing optimum performance and easy installation. The cable diameter is smaller than copper and more flexible which makes for easier installations in tight spaces.

| Part # | Length | Signal Type | Connector | Active/Passive | Max Bandwidth | Max Resolution | Refresh Rate | Jacket Rating |
|--------|--------|-------------|-----------|----------------|--------------------|------------------|--------------|---------------|
| 41450 | 15ft | HDMI 2.0 | Gripping | Active Optical | 18 Gbps High Speed | 4K (3840 x 2160) | 60Hz | Plenum |
| 41451 | 25ft | | | | | | | |
| 41452 | 35ft | | | | | | | |
| 41453 | 50ft | | | | | | | |
| 41454 | 75ft | | | | | | | |
| 41455 | 100ft | | | | | | | |
| 41456 | 125ft | | | | | | | |
| 41457 | 150ft | | | | | | | |
| 41458 | 200ft | | | | | | | |
| 41459 | 250ft | | | | | | | |
| 41460 | 300ft | | | | | | | |



HDMI Active Cables

These cables use an active chipset to boost performance over longer distances, ensuring the full bandwidth with no signal loss.

| Part # | Length | Signal Type | Connector | Active/Passive | Max Bandwidth | Max Resolution | Refresh Rate | Jacket Rating |
|--------|--------|-------------|-----------|----------------|--------------------|------------------|--------------|---------------|
| 41412 | 15ft | HDMI 2.0 | Standard | Active Copper | 18 Gbps High Speed | 4K (3840 x 2160) | 60Hz | In Wall, CL3 |
| 41413 | 25ft | | | | | | | |
| 41414 | 35ft | | | | | | | |
| 41415 | 50ft | | | | | | | |

POWER CORDS

Replacement power cords for computers and displays.



| Part # | Length | Connector | Conductor | Voltage Rating | Amperage Rating | Jacket Rating |
|--------|--------|-----------------------|-----------|----------------|-----------------|---------------|
| 24240 | 1ft | C13 IEC to NEMA 5-15P | 18 AWG | 125V | 10A | SVT |
| 03129 | 3ft | | | | | |
| 03130 | 6ft | | | | | |
| 03134 | 10ft | | | | | |

USB CONNECTIVITY

USB-C® to HDMI adapters and adapter cables support video and four channel audio, allowing a USB-C enabled device to connect to a computer monitor, HDTV, or projector. USB active cables and extenders send USB signals beyond the 5-meter limitation, perfect for conference room and classroom applications.

USB-C to HDMI Adapters

Connect a USB-C device to the HDMI port of an HDTV or projector to display 4K video and audio.

| Part # | Length | Signal Type | Connector | Active/Passive | Refresh Rate | Power Delivery |
|--------|--------|-------------|-------------|------------------|--------------|----------------|
| 29474 | Black | USB-C Male | HDMI Female | 4K (3840 x 2160) | 30Hz | No |
| 29475 | White | | | | | |
| 29531 | Black | USB-C Male | HDMI Female | 4K (3840 x 2160) | 30Hz | Yes |
| 29532 | White | | | | | |



More connectivity solutions are available at C2G.com



USB-C to HDMI Adapter Cables

Connect a USB-C device directly to the HDMI port of an HDTV or projector to display video and audio.

| Part # | Length | Input Connector | Output Connector | Max Resolution | Refresh Rate | Jacket Rating |
|--------|--------|-----------------|------------------|------------------|--------------|---------------|
| 26888 | 3ft | USB-C Male | HDMI Male | 4K (3840 x 2160) | 60Hz | PVC |
| 26889 | 6ft | | | | | |
| 26891 | 9ft | | | | | |
| 26890 | 15ft | USB-C Male | HDMI Male | 4K (3840 x 2160) | 30Hz | PVC |



USB Patch Cables

Connect a USB device to a USB port on a USB hub, computer, USB over Cat extender, and more.

| Part # | Length | Input Connector | Output Connector | Bandwidth | USB Speed | Jacket Rating |
|--------|--------|-----------------|------------------|-----------|-----------|---------------|
| 28101 | 1m | USB-A Male | USB-B Male | USB 2.0 | 480 Mbps | PVC |
| 28102 | 2m | | | | | |
| 28103 | 3m | | | | | |
| 28104 | 5m | | | | | |



USB Active Cables

Extend USB signals beyond the 5-meter length limitation.

| Part # | Length | Input Connector | Output Connector | Bandwidth | USB Speed | Jacket Rating |
|--------|--------|-----------------|------------------|-----------|-----------|---------------|
| 39939 | 5m | USB-A Male | USB-A Female | USB 3.0 | 5 Gbps | PVC |
| 39978 | 5m | USB-A Male | USB-A Female | USB 2.0 | 480 Mbps | PVC |
| 39997 | 5m | USB-A Male | USB-A Male | USB 2.0 | 480 Mbps | PVC |
| 38988 | 25ft | USB-A Male | USB-A Female | USB 2.0 | 480 Mbps | PVC |
| 38989 | 25ft | USB-A Male | USB-B Male | USB 2.0 | 480 Mbps | PVC |
| 38990 | 12m | USB-A Male | 4x USB-A Female | USB 2.0 | 480 Mbps | PVC |
| 38998 | 12m | USB-A Male | USB-B Male | USB 2.0 | 480 Mbps | PVC |
| 38999 | 12m | USB-A Male | USB-A Female | USB 2.0 | 480 Mbps | PVC |
| 39000 | 12m | USB-A Male | USB-A Female | USB 2.0 | 480 Mbps | PVC |
| 39010 | 16ft | USB-A Male | USB-A Female | USB 2.0 | 480 Mbps | Plenum, CMP |
| 39011 | 32ft | | | | | |
| 39935 | 50ft | USB-A Male | USB-A Female | USB 2.0 | 480 Mbps | Plenum, CMP |
| 39936 | 75ft | | | | | |



29338



29341



54285



54284



54289



53878



53880

USB over Cat 1.1 and 2.0

Extend USB signals up to 328ft over Cat5e, Cat6 or Cat6a patch cables.

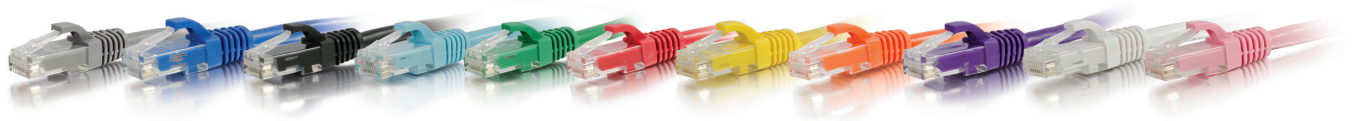


34020

| Part # | Signal Distance | Input Connector | Output Connector | Bandwidth | USB Speed |
|--------|-----------------|-------------------------|------------------|-----------|-----------|
| 29338 | 131ft | USB-A Male | USB-A Female | USB 1.1 | 12 Mbps |
| 29341 | 150ft | USB-A Male | USB-A Female | USB 1.1 | 12 Mbps |
| 54285 | 150ft | USB-B Female | 4x USB-A Female | USB 2.0 | 480 Mbps |
| 54284 | 150ft | USB-A Male | USB-A Female | USB 2.0 | 480 Mbps |
| 54289 | 150ft | USB-B Female Wall Plate | USB-A Female | USB 2.0 | 480 Mbps |
| 34020 | 328ft | USB-B Female | 4x USB-A Female | USB 2.0 | 480 Mbps |
| 53878 | 328ft | USB-B Female Wall Plate | USB-A Female | USB 2.0 | 480 Mbps |
| 53880 | 328ft | USB-B Female | USB-A Female | USB 2.0 | 480 Mbps |

CAT6 AND CAT6A PATCH CABLES

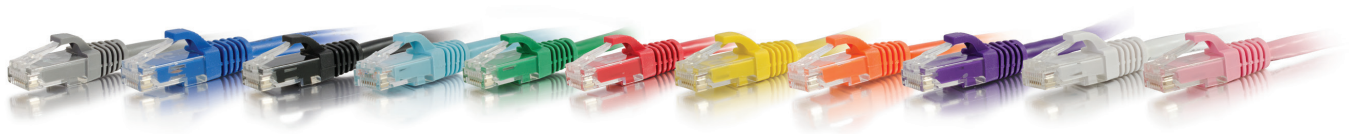
Cat6 and Cat6a patch cables are used for Power Over Ethernet applications (POE), A/V and USB extensions, Networking, Ethernet cabling and more.



| | Network Data Speed | | | | Bandwidth | Distance | Near-End Crosstalk (NEXT) |
|-------|--------------------|----------|--------|---------|-----------|--------------|---------------------------|
| | 10 Mbps | 100 Mbps | 1 Gbps | 10 Gbps | | | |
| Cat6 | ✓ | ✓ | ✓ | ✓ | 250 MHz | Up to 164 ft | Good |
| Cat6a | ✓ | ✓ | ✓ | ✓ | 500 MHz | Up to 328 ft | Best |

Cat6 Snagless Patch Cables

| | Grey | Blue | Black | Green | Red | Yellow | Orange | Purple | White | Pink |
|-------|-------|-------|-------|-------|-------|--------|--------|--------|-------|-------|
| 6in | 00951 | 00952 | 00953 | 00954 | 00955 | 00956 | 00957 | 00958 | 00959 | 00960 |
| 1ft | 27130 | 27140 | 27150 | 27170 | 27180 | 27190 | 27810 | 27800 | 27160 | 04043 |
| 2ft | 03965 | 03973 | 03981 | 03989 | 03998 | 04007 | 04016 | 04025 | 04034 | 04044 |
| 3ft | 27131 | 27141 | 27151 | 27171 | 27181 | 27191 | 27811 | 27801 | 27161 | 04045 |
| 4ft | 03966 | 03974 | 03982 | 03990 | 03999 | 04008 | 04017 | 04026 | 04035 | 04046 |
| 5ft | 31340 | 31341 | 31342 | 31344 | 31345 | 31346 | 31348 | 31347 | 31343 | 04047 |
| 6ft | 03967 | 03975 | 03983 | 03991 | 04000 | 04009 | 04018 | 04027 | 04036 | 04048 |
| 7ft | 27132 | 27142 | 27152 | 27172 | 27182 | 27192 | 27812 | 27802 | 27162 | 04049 |
| 8ft | 03968 | 03976 | 03984 | 03992 | 04001 | 04010 | 04019 | 04028 | 04037 | 04050 |
| 9ft | 03969 | 03977 | 03985 | 03993 | 04002 | 04011 | 04020 | 04029 | 04038 | 04051 |
| 10ft | 27133 | 27143 | 27153 | 27173 | 27183 | 27193 | 27813 | 27803 | 27163 | 04052 |
| 12ft | 03970 | 03978 | 03986 | 03994 | 04003 | 04012 | 04021 | 04030 | 04039 | 04053 |
| 14ft | 27134 | 27144 | 27154 | 27174 | 27184 | 27194 | 27814 | 27804 | 27164 | 04054 |
| 15ft | 22016 | 22015 | 22014 | 03995 | 04004 | 04013 | 04022 | 04031 | 04040 | 04055 |
| 20ft | 03971 | 03979 | 03987 | 03996 | 04005 | 04014 | 04023 | 04032 | 04041 | 04056 |
| 25ft | 27135 | 27145 | 27155 | 27175 | 27185 | 27195 | 27815 | 27805 | 27165 | 04057 |
| 30ft | 03972 | 03980 | 03988 | 03997 | 04006 | 04015 | 04024 | 04033 | 04042 | 04058 |
| 35ft | 31350 | 31351 | 31352 | 31354 | 31355 | 31356 | 31358 | 31357 | 31353 | 04059 |
| 50ft | 27136 | 27146 | 27156 | 27176 | 27186 | 27196 | 27816 | 27806 | 27166 | 04060 |
| 75ft | 31360 | 31361 | 31362 | 31364 | 31365 | 31366 | 31368 | 31367 | 31363 | 04061 |
| 100ft | 27137 | 27147 | 27157 | 27177 | 27187 | 27197 | 27817 | 27807 | 27167 | 04062 |
| 125ft | 27138 | 27148 | 27158 | 27178 | 27188 | 27198 | 27818 | 27808 | 27168 | — |
| 150ft | 27139 | 27149 | 27159 | 27179 | 27189 | 27199 | 27819 | 27809 | 27169 | 04063 |



Cat6a Snagless Patch Cables

| | Grey | Blue | Black | Aqua | Green | Red | Yellow | Orange | Purple | White | Pink |
|-------|-------|-------|-------|-------|-------|-------|--------|--------|--------|-------|-------|
| 6in | 00972 | 00974 | 00976 | 00978 | 50778 | 50797 | 50740 | 50835 | 50816 | 50759 | 50854 |
| 1ft | 00655 | 00689 | 00723 | 00757 | 50779 | 50798 | 50741 | 50836 | 50817 | 50760 | 50855 |
| 2ft | 00656 | 00690 | 00724 | 00758 | 50780 | 50799 | 50742 | 50837 | 50818 | 50761 | 50856 |
| 3ft | 00657 | 00691 | 00725 | 00759 | 50781 | 50800 | 50743 | 50838 | 50819 | 50762 | 50857 |
| 4ft | 00658 | 00692 | 00726 | 00760 | 50782 | 50801 | 50744 | 50839 | 50820 | 50763 | 50858 |
| 5ft | 00659 | 00693 | 00727 | 00761 | 50783 | 50802 | 50745 | 50840 | 50821 | 50764 | 50859 |
| 6ft | 00660 | 00694 | 00728 | 00762 | 50784 | 50803 | 50746 | 50841 | 50822 | 50765 | 50860 |
| 7ft | 00661 | 00695 | 00729 | 00763 | 50785 | 50804 | 50747 | 50842 | 50823 | 50766 | 50861 |
| 8ft | 00662 | 00696 | 00730 | 00764 | 50786 | 50805 | 50748 | 50843 | 50824 | 50767 | 50862 |
| 9ft | 00663 | 00697 | 00731 | 00765 | 50787 | 50806 | 50749 | 50844 | 50825 | 50768 | 50863 |
| 10ft | 00664 | 00698 | 00732 | 00766 | 50788 | 50807 | 50750 | 50845 | 50826 | 50769 | 50864 |
| 12ft | 00665 | 00699 | 00733 | 00767 | 50789 | 50808 | 50751 | 50846 | 50827 | 50770 | 50865 |
| 14ft | 00666 | 00700 | 00734 | 00768 | 50790 | 50809 | 50752 | 50847 | 50828 | 50771 | 50866 |
| 15ft | 00667 | 00701 | 00735 | 00769 | 50791 | 50810 | 50753 | 50848 | 50829 | 50772 | 50867 |
| 20ft | 00668 | 00702 | 00736 | 00770 | 50792 | 50811 | 50754 | 50849 | 50830 | 50773 | 50868 |
| 25ft | 00669 | 00703 | 00737 | 00771 | 50793 | 50812 | 50755 | 50850 | 50831 | 50774 | 50869 |
| 30ft | 00670 | 00704 | 00738 | 00772 | 50794 | 50813 | 50756 | 50851 | 50832 | 50775 | 50870 |
| 35ft | 00671 | 00705 | 00739 | 00773 | 50795 | 50814 | 50757 | 50852 | 50833 | 50776 | 50871 |
| 50ft | 50885 | 50877 | 50881 | 50873 | 50796 | 50815 | 50758 | 50853 | 50834 | 50777 | 50872 |
| 75ft | 50886 | 50878 | 50882 | 50874 | — | — | — | — | — | — | — |
| 100ft | 50887 | 50879 | 50883 | 50875 | — | — | — | — | — | — | — |
| 150ft | 50888 | 50880 | 50884 | 50876 | — | — | — | — | — | — | — |



HDBaseT Certified Cat6a Patch Cables

HDBaseT™ certified cable designed for HD A/V applications from HDBaseT extenders.

| Part # | Length | Color | Certification | Wiring Scheme | Conductor | Shielding | Jacket Rating |
|--------|--------|-------|---------------------|---------------|-----------|---------------|---------------|
| 43171 | 35ft | Blue | HDBaseT Class A & B | 568B | 23 AWG | Discontinuous | Plenum, CMP |
| 43172 | 50ft | | | | | | |
| 43173 | 75ft | | | | | | |
| 43174 | 100ft | | | | | | |
| 43175 | 150ft | | | | | | |
| 43176 | 200ft | | | | | | |
| 43177 | 250ft | | | | | | |
| 43178 | 300ft | | | | | | |

More connectivity solutions are available at C2G.com



6500 Poe Ave.
Dayton, OH 45414
Phone: 800.CABL.911
www.c2g.com

Follow Us

