

# RECOVERY SERIES BACKUP

ALL-IN-ONE BACKUP APPLIANCES FOR SIMPLER, SMARTER IT | GEN 8



## Recover with Confidence

Unitrends all-in-one appliances protect from all sides—from ransomware to disaster to deleted files.



Recovery Series appliances combine backup software, storage, compute, & cloud into one secure box.

- No FINGER POINTING**  
 All-in-one approach removes backup complexity, with comprehensive 24/7/365 support.
- LESS MANAGEMENT**  
 Pre-integrated backup appliances and intuitive management console cut admin time by 50%.
- MORE SCALABILITY**  
 Backup appliances grow with your business. Easily scale up, out, and to the cloud.
- MORE UPTIME**  
 Reduce downtime with instant recovery, ransomware detection, and automated disaster recovery testing.
- MORE CONFIDENCE**  
 SLA policy automation proves recoverability and compliance — define, analyze, and report.
- MORE FREE TIME**  
 Predictive analytics proactively identify recovery issues. Spend your free time on other tasks.



## Recovery Series

Unitrends Recovery Series purpose-built backup appliances make it easy to meet your SLAs. No more broken promises, just simpler, smarter IT.

### 15 MODELS AVAILABLE, RANGING FROM 2 TB TO 120 TB

#### SLA Policy Automation —

Define & schedule backups in one easy step based on your RTO and RPO goals.

#### Automatic ransomware protection —

Built-in AI detects and alerts you to ransomware.

#### Cloud empowered —

Unitrends Cloud, Unitrends DRaaS, public clouds.

#### Automated disaster recovery testing —

With recovery analytics and RPO/RTO reports.

#### Preconfigured, enterprise-class reporting —

Easily satisfy compliance requirements & your boss.

#### Instant Recovery —

One click transforms Windows servers into VMs; instantly recover without setting up new hardware.

#### Data Copy Access —

Instant creation of isolated, fully featured test and dev environments.

#### Unified bare metal backup —

1-pass dissimilar bare metal restore.

#### WAN-optimized replication —

Combines deduplication, acceleration, compression, and military-grade encryption.

#### Local archiving —

Disk-to-disk-to-any (D2D2X) to removable media, including tape and SATA disk.

**Best-in-class backup for physical & virtual workloads —**  
VMware, Hyper-V, Windows, Nutanix, and more.

#### Adaptive Deduplication™ —

Global and inline for maximum storage efficiency.

#### Near continuous data protection —

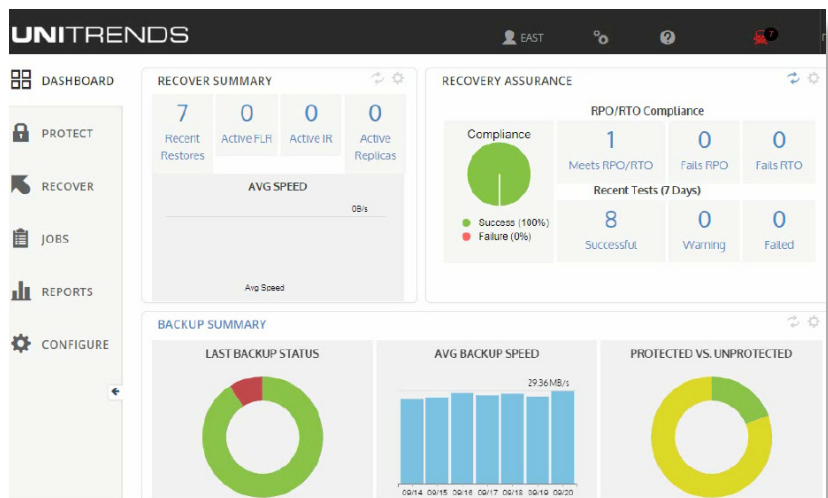
Backup as often as every 60 seconds.

#### Intuitive, centralized user interface —

Manage all of your backups, reports, & archiving from one console.

#### 24/7/365 Support —

Based in the U.S. with a 98% customer satisfaction rate.



# Recovery Series Features

All models are available in Enterprise or Enterprise Plus editions.

Features	Enterprise	Enterprise Plus
Comprehensive Backup for Physical, Virtual (VMware, Hyper-V, XenServer), Nutanix, Cisco UCS – <a href="#">See 250+ Supported Systems</a>	✓	✓
<a href="#">Automatic Ransomware Detection</a>	✓	✓
24x7 Customer Support	✓	✓
Global Adaptive <a href="#">Deduplication</a>	✓	✓
Local Backup Copies (NAS, DAS, and SAN)	✓	✓
<a href="#">Unitrends Cloud</a> & <a href="#">DRaaS</a> Enabled	✓	✓
Integration with <a href="#">AWS</a> & <a href="#">Azure</a> Clouds	✓	✓
Replication Target & Cross Replication	✓	✓
Single Pane of Glass User Interface	✓	✓
Hot/Cold & Dissimilar Bare Metal Recovery	✓	✓
AES-256 Bit Encryption	✓	✓
Instant Recovery (P2V); (V2V); (V2P)	✓	✓
VMware and Windows Replicas	✓	✓
Backup Scheduling & Inclusion/Exclusion Backup	✓	✓
Bandwidth Throttling	✓	✓
Second-Site WAN-Optimized Backup Copies	✓	✓
Comprehensive Reporting & Alert-Based Monitoring	✓	✓
Self-Service for Application Owners	✓	✓
<a href="#">Predictive Analytics-based Hardware Resilience &amp; Failure Alerts</a>	✓	✓
<a href="#">SLA Policy Automation</a>	✓	✓
Integration with RESTful API	✓	✓
Database Protection for SQL Server & Oracle	✓	✓
Enterprise Application Backup - Exchange, SharePoint	✓	✓
<a href="#">New Long-Term Data Management</a>	✓	✓
<a href="#">Distributed Enterprise Manager</a>	✗	✓
<a href="#">Automated Recovery Testing</a>	✗	✓
<a href="#">Automated Failover</a>	✗	✓
<a href="#">RTO/RPO Compliance Reporting</a>	✗	✓
<a href="#">Recovery Analytics</a>	✗	✓
<a href="#">Failover/Failback to AWS/Azure</a>	✗	✓
<a href="#">Unlimited Granular Exchange Recovery</a>	✗	✓
<a href="#">Security-Integrated Copy Data Management (CDM)</a>	✗	✓

✓ Included ✗ Requires Enterprise Plus

Recovery Series Backup Appliance Specifications | Gen 8 Models

	8002	8004	8006	8008	8010	8012	8016S	8020S	8024S	8032S	8040S	8060S	8080S	8100S	8120S
Usable Capacity (TB)	2	4	6	8	10	12	16	20	24	32	40	60	80	100	120
Suggested Backup (TB)*	1.1	2.4	3.6	4.8	6.0	7.6	10.1	12.6	16.6	22.0	27.5	41.2	55.0	68.7	82.4
Form Factor	1U Short	1U Short	1U Short	1U Short	1U Short	1U Short	1U	1U	2U	2U	2U	2U	2U	2U	2U
Processor Cores/ Threads	2/4	2/4	4/8	4/8	4/8	4/8	4/8	4/8	16/32	16/32	16/32	16/32	20/40	20/40	20/40
RAM (GB)	8	8	16	16	16	16	32	64	64	64	128	128	256	256	256
ECC RAM	✗	✗	✗	✗	✗	✗	✓	✓	✓	✓	✓	✓	✓	✓	✓
AES-NI	✓	✓	✓	✓	✓	✓	✓	✓	✓	✓	✓	✓	✓	✓	✓
IPMI	✗	✗	✗	✗	✗	✗	✓	✓	✓	✓	✓	✓	✓	✓	✓
Hot Swap HD Drives	✗	✗	✗	✗	✗	✗	✓	✓	✓	✓	✓	✓	✓	✓	✓
1 Gb Ethernet Ports	1	1	1	1	1	1	✗	✗	✗	✗	✗	✗	✗	✗	✗
10 Gb Base-T RJ45 Ports	✗	✗	✗	✗	✗	✗	2	2	2	2	2	2	2	2	2
<b>ADD-ON ADAPTERS</b>	<b>8002</b>	<b>8004</b>	<b>8006</b>	<b>8008</b>	<b>8010</b>	<b>8012</b>	<b>8016S</b>	<b>8020S</b>	<b>8024S</b>	<b>8032S</b>	<b>8040S</b>	<b>8060S</b>	<b>8080S</b>	<b>8100S</b>	<b>8120S</b>
<a href="#">2x 10 Gb Ethernet SFP + NIC</a>	✗	✗	✗	✗	✗	✗	✗	✗	*	*	*	*	*	*	*
1x8 Gb Ethernet Fibre Channel	✗	✗	✗	✗	✗	✗	✗	✗	*	*	*	*	*	*	*
<b>ARCHIVING ADAPTERS</b>	<b>8002</b>	<b>8004</b>	<b>8006</b>	<b>8008</b>	<b>8010</b>	<b>8012</b>	<b>8016S</b>	<b>8020S</b>	<b>8024S</b>	<b>8032S</b>	<b>8040S</b>	<b>8060S</b>	<b>8080S</b>	<b>8100S</b>	<b>8120S</b>
USB 3.0	✓	✓	✓	✓	✓	✓	✓	✓	✓	✓	✓	✓	✓	✓	✓
SAS - 4 Port Controller (RXDA)	✗	✗	✗	✗	✗	✗	✓+	✓+	*	*	*	*	*	*	*
12 Gbps SAS Controller (Tape)	✗	✗	✗	✗	✗	✗	✓†	✓†	*†	*†	*†	*†	*†	*†	*†
<b>STORAGE</b>	<b>8002</b>	<b>8004</b>	<b>8006</b>	<b>8008</b>	<b>8010</b>	<b>8012</b>	<b>8016S</b>	<b>8020S</b>	<b>8024S</b>	<b>8032S</b>	<b>8040S</b>	<b>8060S</b>	<b>8080S</b>	<b>8100S</b>	<b>8120S</b>
SSD Flash (in GBs)	✗	✗	✗	✗	✗	✗	256	256	256	256	256	256	256	256	256
OS Disk	✗	✗	✗	✗	✗	✗	✗	✗	2x1TB	2x2TB	2X128GB	2X128GB	2x128GB	2x128GB	2x128GB
OS RAID Level	✗	✗	✗	✗	✗	✗	✗	✗	RAID 1	RAID 1	RAID 1	RAID 1	RAID 1	RAID 1	RAID 1
Backup Disk (in TBs)	1x2	2x4	2x6	2x8	2x10	2x12	4x8	4X10	8x4	10X4	12X4	12X6	12x8	12x10	12x12
Backup RAID Type - Level	N/A	RAID 1	RAID 1	RAID 1	RAID 1	RAID 1	RAID 10	RAID 10	RAID 6	RAID 6	RAID 6	RAID 6	RAID 6	RAID 6	RAID 6

✓ Included + Included in Enterprise Plus Editions \* Optional ✗ Not Available

\* Suggested backup sizes are estimates, based on data measured across thousands of customers. The estimates assume 30 days of retention and a typical composition of file and VM data.

† Additionally requires a mini SAS cable, available from third party vendors

‡ Additionally requires an adapter cable, available from Unitrends (item number ADAK-1U-SAS2ESATA)

Recovery Series Backup Appliance Specifications | Gen 8 Models

	8002	8004	8006	8008	8010	8012	8016S	8020S	8024S	8032S	8040S	8060S	8080S	8100S	8120S
<b>ADDITIONAL OPTIONS</b>	<b>8002</b>	<b>8004</b>	<b>8006</b>	<b>8008</b>	<b>8010</b>	<b>8012</b>	<b>8016S</b>	<b>8020S</b>	<b>8024S</b>	<b>8032S</b>	<b>8040S</b>	<b>8060S</b>	<b>8080S</b>	<b>8100S</b>	<b>8120S</b>
<a href="#">NDMP Backup</a> (EMC, NetApp)	x	x	x	x	x	x	+	+	+	+	+	+	+	+	+
<a href="#">Pledge Evergreen Hardware</a>	*	*	*	*	*	*	*	*	*	*	*	*	*	*	*
<b>PLATFORM CHARACTERISTICS</b>	<b>8002</b>	<b>8004</b>	<b>8006</b>	<b>8008</b>	<b>8010</b>	<b>8012</b>	<b>8016S</b>	<b>8020S</b>	<b>8024S</b>	<b>8032S</b>	<b>8040S</b>	<b>8060S</b>	<b>8080S</b>	<b>8100S</b>	<b>8120S</b>
Width (inches)	16.8 (426 mm)	16.8 (426 mm)	16.8 (426 mm)	16.8 (426 mm)	16.8 (426 mm)	16.8 (426 mm)	17.2 (437 mm)	17.2 (437 mm)	17.2 (437 mm)	17.2 (437 mm)	17.2 (437 mm)	17.2 (437 mm)	17.2 (437 mm)	17.2 (437 mm)	17.2 (437 mm)
Height (inches)	1.7 (43 mm)	1.7 (43 mm)	1.7 (43 mm)	1.7 (43 mm)	1.7 (43 mm)	1.7 (43 mm)	1.7 (43 mm)	1.7 (43 mm)	3.5 (89 mm)	3.5 (89 mm)	3.5 (89 mm)	3.5 (89 mm)	3.5 (89 mm)	3.5 (89 mm)	3.5 (89 mm)
Depth (inches)	14 (356 mm)	14 (356 mm)	14 (356 mm)	14 (356 mm)	14 (356 mm)	14 (356 mm)	19.85 (650 mm)	19.85 (650 mm)	25.5 (647 mm)	25.5 (647 mm)	25.5 (647 mm)	25.5 (647 mm)	25.5 (647 mm)	25.5 (647 mm)	25.5 (647 mm)
Unit Weight (Pounds)	16 (7.3 kg)	16 (7.3 kg)	16 (7.3 kg)	16 (7.3 kg)	16 (7.3 kg)	16 (7.3 kg)	27 (12.2 kg)	27 (12.2 kg)	57 (25.9 kg)	56 (25.4 kg)	56 (25.4 kg)	57 (25.9 kg)	58 (26.3 kg)	56 (25.4 kg)	57 (25.9 kg)
Shipping Weight (Pounds)	20 (9 kg)	20 (9 kg)	20 (9 kg)	20 (9 kg)	20 (9 kg)	20 (9 kg)	35 (15.9 kg)	35 (15.9 kg)	76 (34.5 kg)	75 (34 kg)	75 (34 kg)	76 (34.5 kg)	77 (35 kg)	75 (34 kg)	76 (34.5 kg)
AC Inputs (VAC)	100/ 240	100/ 240	100/ 240	100/ 240	100/ 240	100/ 240	100/ 240	100/ 240	100/ 240	100/ 240	100/ 240	100/ 240	100/ 240	100/ 240	100/ 240
AC Power Consumption (W)	200	200	200	200	200	200	350	350	920	920	920	920	920	920	920
Redundant Power Supply	x	x	x	x	x	x	x	x	✓	✓	✓	✓	✓	✓	✓
Heat Generated While Operating (BTUs)	833	833	833	833	833	833	1495	1495	3340	3340	3340	3340	3340	3340	3340
Non-Operating Vibration	350	350	350	350	350	350	350	350	350	350	350	350	350	350	350
Operating Shock (2ms(Gs))	65	65	65	65	65	65	65	65	65	65	65	65	65	65	65
Non-Operating Shock (1ms(Gs))	350	350	350	350	350	350	350	350	350	350	350	350	350	350	350

✓ Included    + Included in Enterprise Plus Editions    \* Optional    x Not Available